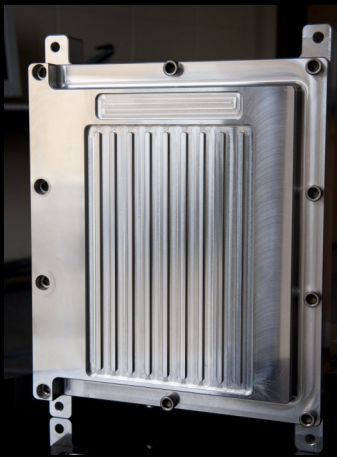


IDRPT-9000 Cellular Repeater



The IDRPT-9000 is a indoor or outdoor carrier class cellular extender and repeater for 2G GSM, CDMA, GSM, WCDMA, 3G UMTS, 4G LTE*, iDEN, TDMA, and AMPS. The unit is designed primarily for in-building reception problems. Distances away from the cell tower can be up to ~ 40Km/25 miles or more.

Typical applications include enhancing cellular reception inside concrete and/or metal structures. Cellular extension inside large buildings, hospitals, government complexes or just about any location with limited or non existent cellular reception.

The IDRPT-9000 has an advanced web based interface for programming, monitoring and troubleshooting with Email alert capability.

The IDRPT-9000 is proudly manufactured in North America to the highest engineering and component standards providing the most powerful and reliable indoor cellular repeater in its class.

- Indoor/Outdoor cellular repeater with IP management access
- Oscillation detection and auto-correction
- Remote control (soft turn on/turn off/standby)
- Remote monitoring (temperature, current) with email alert
- Two level password (monitoring vs. configuration)
- Extends GSM, CDMA, WCDMA, 3G UMTS, 4G LTE*, TDMA and AMPS cellular service from existing cell towers up to 40Km/25 miles or more
- Extends cellular Voice and Data services
- Saves money over Femto and Pico cells which have recurring monthly costs.
- Allows indoor building areas with weak or dead spot signals to have full cellular service
- Provides hard to reach service in hospitals, medical centers and governmental buildings
- Simple and rapid deployment
- No programming knowledge required - Manual or Web Based GUI capability
- Supports 700 MHz LTE service, 800 MHz iDEN service, 850 MHz Cellular service **or** 900 MHz GSM service.
- Current FCC certified frequency is 850 Mhz.
- Power output - +25dBm RMS, 2 Tone.
- Hardened NEMA enclosure with AC or DC power supply
- Low power requirements - 20 watts
- Extreme temperature capability / -40° to +55° Celsius
- Power Amplification Protection
- 2 Year Warranty

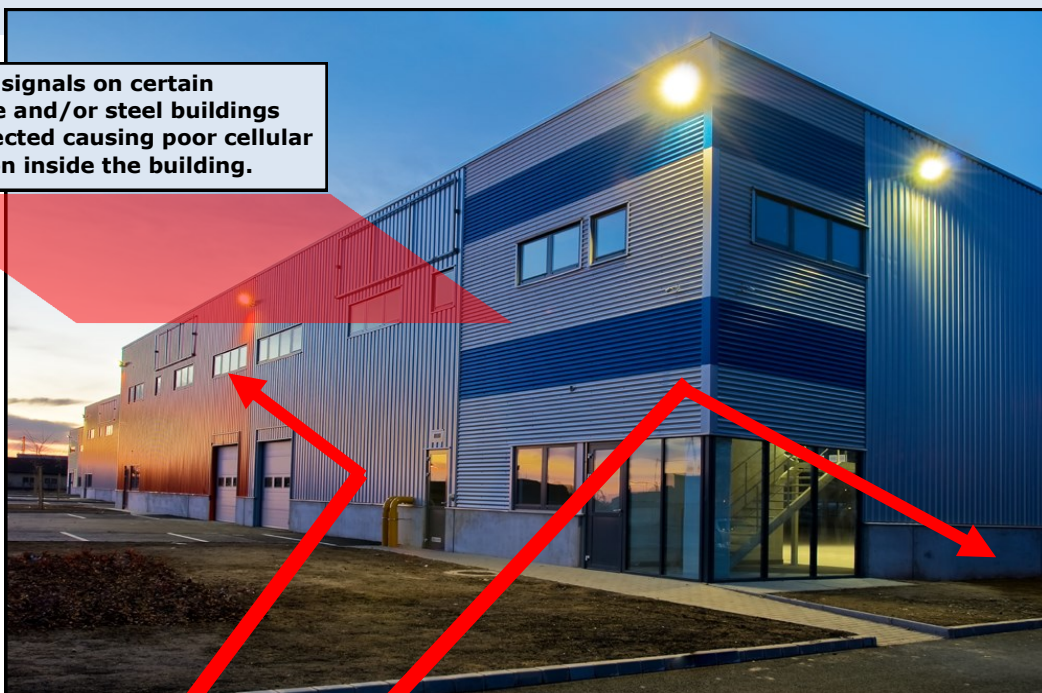
* 700 LTE under development, available Q2 2017



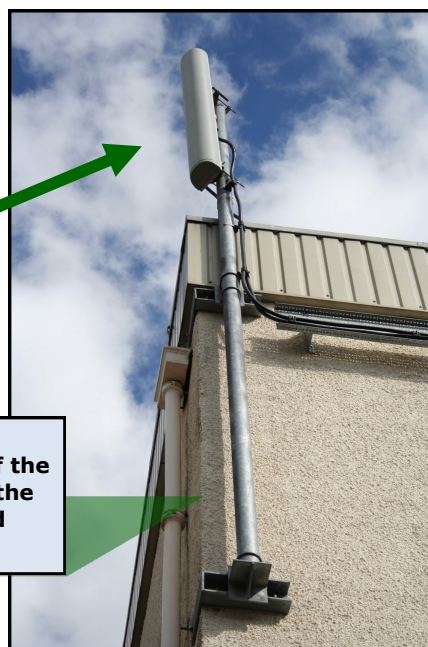
The IDRPT-9000 can easily address limited cellular reception or dead spots within buildings.

In many cases there will be cellular reception issues within concrete or steel buildings. Certain offices or parts of the building may have cellular access, while others have limited or non-existent service. Cellular calls may take place but quickly drop the call, produce poor call quality or slow Internet access. These are all symptoms of cellular signal obstruction.

Cellular signals on certain concrete and/or steel buildings get reflected causing poor cellular reception inside the building.



The IDRPT-9000 picks up the cellular signal on the outside of the building and regenerates it on the inside for crystal clear calls and high speed internet access.





Ordering Options

Frequency Range Options:

LTE 700 AT&T
LTE 700 VZW
iDEN 800
Cell 850
GSM 900

Model Numbers:

IDRPT-9000-7AT-XX
IDRPT-9000-7VZ-XX
IDRPT-9000-800-XX
IDRPT-9000-850-XX
IDRPT-9000-900-XX

Ordering note: XX is Power (AC or DC)

Technical Specifications

Frequency Range:

Passband Gain:

Noise Level:

EVM:

Absolute Delay:

Power Output:

RF Gain Adjustment:

RF Connectors:

Software/Digital Gain Control:

Digital Power Control:

Power Supply (AC):

Power Supply (DC):

Operating Temperature:

Storage Temperature:

Unit Size:

Weight:

Enclosure Type:

Compliance:

Warranty:

700/800/850/900 MHz

698-716/728-746 MHz (AT&T LTE lower band)

746-757/776-787 MHz (VZW LTE upper band)

806-821/851-866 MHz (iDEN 800)

824-849/869-894 MHz (Cell 850)

890-915/935-960 MHz (GSM 900)

80 dB

< 5dB

< 3%

< 2 μ s

+25 dBm RMS, 2 Tone

0.5dB increments via software

50 Ω N Type, Female

31 dB adjustment range

Adjustable max. power output

110-230 VAC 50/60Hz 20 Watts

24 VDC (optional 12VDC factory set)

-40°C - +55°C

-40°C - +70°C

12 x 16.5 x 3"
30.5 x 41.9 x 7.6 cm

25 lbs, 11 kg Typical

IP67, Aluminum

EMC

2 Year

For more information:

XPANDAc^{ell}

Tel: 1-855-XPANDAc^{ell} Fax: 1-410-583-1704
International: 1-410-327-2306
sales@xpandacell.com www.xpandacell.com

©2017 Copyright 2017 XPANDAc^{ell} All rights reserved. XPANDAc^{ell} and the XPANDAc^{ell} logo are registered trademarks. All other trademarks are the property of their respective owners. Statements herein are based on normal operating conditions and are not intended to create any implied warranty of merchantability or fitness for a particular purpose. XPANDAc^{ell} reserves the right to modify at any time without notice these statements, our services, products, and their warranty and performance specifications.