

FPT-5000 RF over Fiber Extender



The FPT-5000 is a carrier class cellular fiber optic extender and repeater for CDMA, WCDMA, GSM, 3G, 4G* and AMPs. The unit converts RF signals to fiber optic for long distance transport and then converted back to RF. When used in conjunction with the RPT-9000 cellular extender, the FPT-5000 allows antennas to be mounted at distances not possible with coax and heliax cabling.

Antennas can now be mounted kilometers/ miles away from the RPT-9000 cellular extender. The FPT-5000 can also be used with other 3rd party RF devices and applications. Typical applications include areas obstructed by large buildings, hills, mountains and deep underground distances.



The FPT-5000 is proudly manufactured in North America to the highest engineering and component standards providing the most powerful and reliable cellular repeater in its class.

- Extends Radio Frequency signals over fiber optic cable
- Extends antennas kilometers/miles from their transmitter or receiver
- Allows the RPT-9000 cellular extender to reach areas and distances not possible with standard coax and heliax cabling
- Available as an integrated option on the RPT-9000 cellular repeater
- Compatible with 3rd party RF devices and applications
- Available in Non-Redundant, Passive and Active Redundant configurations
- Optional Internet access and alarm notification
- Less than 0.5dB signal loss per km
- Uses light weight fiber optic cabling at 1310 ± 20nm with Single Mode Angle Polished connectors
- Standard N Type coax connection for RF input
- Simple and rapid deployment
- No programming knowledge required (Non Redundant version)
- Supports standard 850, 900, 1800, 1900MHz and 2100Mhz cellular frequencies
- Hardened NEMA enclosure with AC or DC power supply
- Low power requirements - 50 watts
- Extreme temperature capability / -30 to +60 Celsius
- 2 Year Warranty

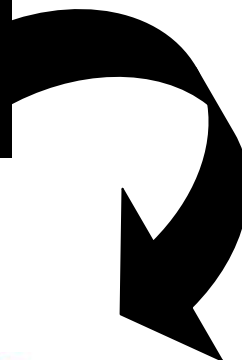
* 4G under development

** Distance is dependent on cellular timing and terrain

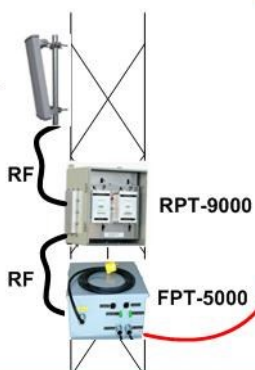


FPT-5000 
+ RPT-9000 

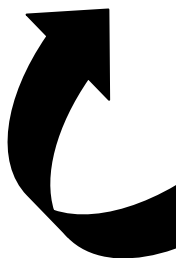
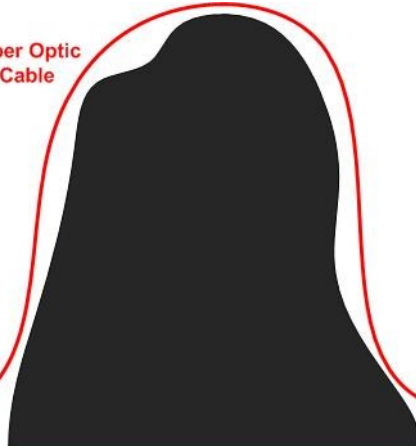
= Extended Distance



Cellular Tower
GSM or CDMA



Fiber Optic
Cable



The Power of Fiber Optics

The FPT-5000 utilizes Fiber Optics to provide extension of Cellular RF signals which include CDMA, WCDMA, GSM, 3G, 4G* and AMPs. By utilizing Fiber Optics, we extend the cellular RF signal without changing the original signal. This allows for clean and precise reproduction of original signal.



Technical Specifications

Frequency Range:	700-2100MHz
RF Gain at 0 dB Optical Loss:	0.4 dB/km
Gain Accuracy:	± 1 dB
Gain Flatness Across Band:	± 1 dB
Gain Slope:	< 0.7 dB / 36 MHz
Gain Adjustment Range	± 3 dB
Gain Stability Over Temp. Rx / Tx:	< ± 3 dB Over Operating Temp. Range
Input TOI @ 1.2 GHz:	±3 dB
Noise Figure @ 1.2 GHz:	< 36 dB, 0 dB optical loss
Carrier to Noise Ratio @ 1.2 GHz:	< 65 dB, 0 dB optical loss
Input/Output Impedance, VSWR	50 W, VSWR < 1.5 : 1 (14 dB Minimum)
RF Connectors:	N TYPE, Female
Optical Connectors:	Suhner E2000 Single Mode Angle Polished
Wavelength:	1310 ± 20nm
Abs. Maximum RF Input (Tx):	> +15 dBm, 5 VDC
Power Output:	+4 dBm, 3mW Nominal
Operating Temperature:	-10°C - +50°C
Storage Temperature:	-40°C - +70°C
Power Supply:	90 - 230 VAC, DC Optional
Current Consumption:	Rx < 150mA, Tx < 180mA
Unit Size:	14.5 x 16.5 x 11.5", 36 x 41 x 29 cm
Weight:	22 lbs, 10 kg Typical

For more information:

XPANDAcell

Tel: 1-855-XPANDAcell Fax: 1-410-583-1704

International: 1-410-327-2306

sales@xpandacell.com www.xpandacell.com

©2013 Copyright 2013 XPANDAcell All rights reserved. XPANDAcell and the XPANDAcell logo are registered trademarks. All other trademarks are the property of their respective owners. Statements herein are based on normal operating conditions and are not intended to create any implied warranty of merchantability or fitness for a particular purpose. XPANDAcell reserves the right to modify at any time without notice these statements, our services, products, and their warranty and performance specifications.